



OASIS Step Guides

OASIS Edge Tracking

Tracking Part Placement

**Speed, Accurate, Easy.
Measure On.**

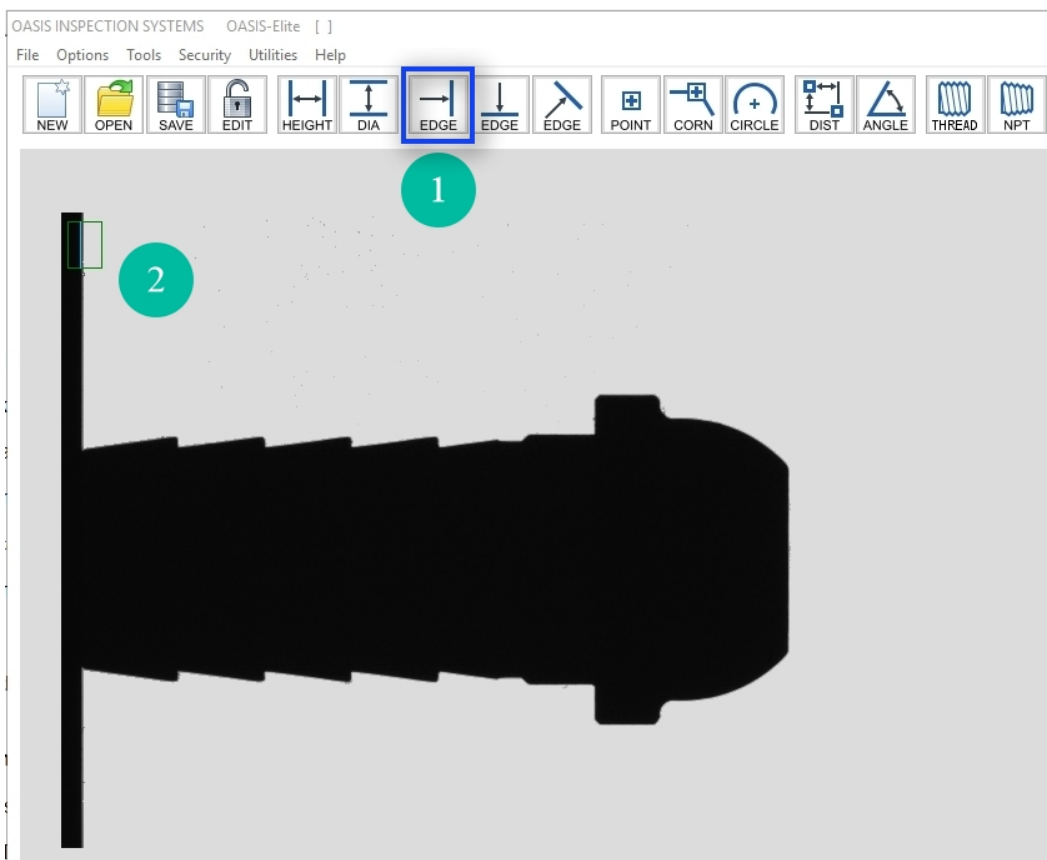
OASIS Inspection Systems LLC
110 Sleepy Hollow Drive
Middletown, DE 19709
(302) 449-0199 OFFICE
(302) 449-0288 FAX
www.oasisinspectionssystem.com

Tracking the stage surface

Tracking is used to reposition the tool windows based on the placement of the stage or part. Using tracking, the part does not need to be positioned at the same place every time to produce accurate results. Tracking should be done for both axes.

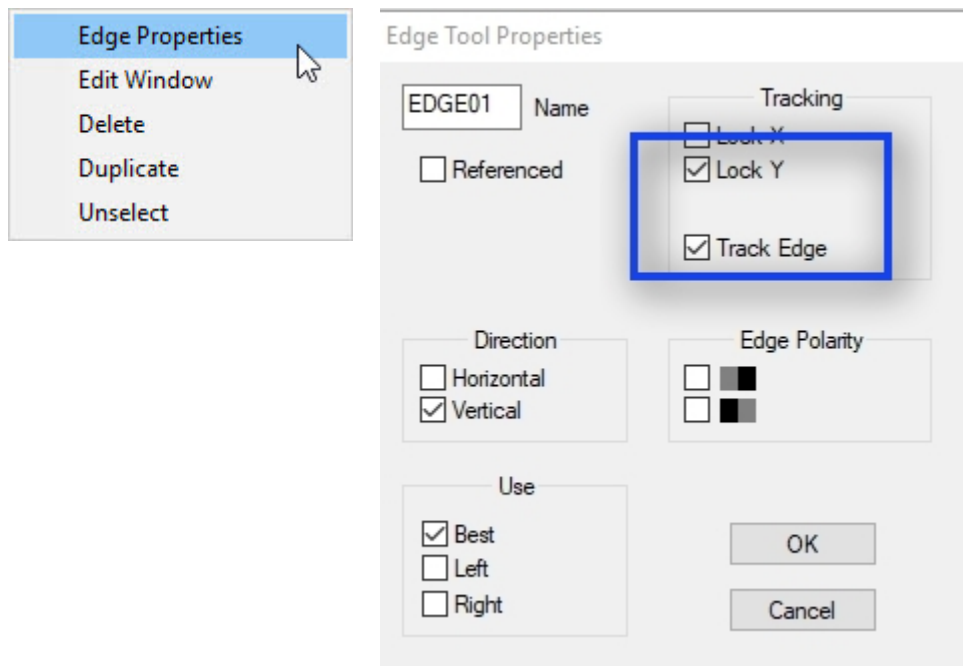
1. Press the Vertical Edge Icon. The Stage's sides have been machined such that the surface is very narrow at either extreme (when facing the stage, at 12 o'clock and 6 o'clock). This creates a sharp and accurate image of the stage's top surface. Position the window in a similar manner as shown at #2 The Edge Tool will find the surface of the stage which the part rests on.

In addition to the importance of the placement/location of the Tool Window, the size is also very important. The size, as shown is about 3/4 of the size of one of the icons.



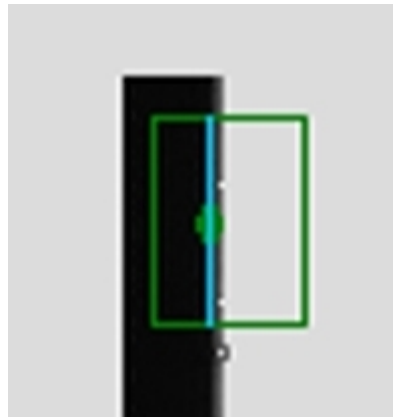
Tracking the Stage Surface

2. Set the Tool's Track Edge and Lock Y Properties by Right-Clicking the Mouse and Choosing Edge Properties.. The Track Edge property will reposition ALL the windows that are not locked in the X (horizontal) direction. Because the stage does not move in the Y (horizontal) direction, The Lock Y property will keep this tool's window fixed in that direction.



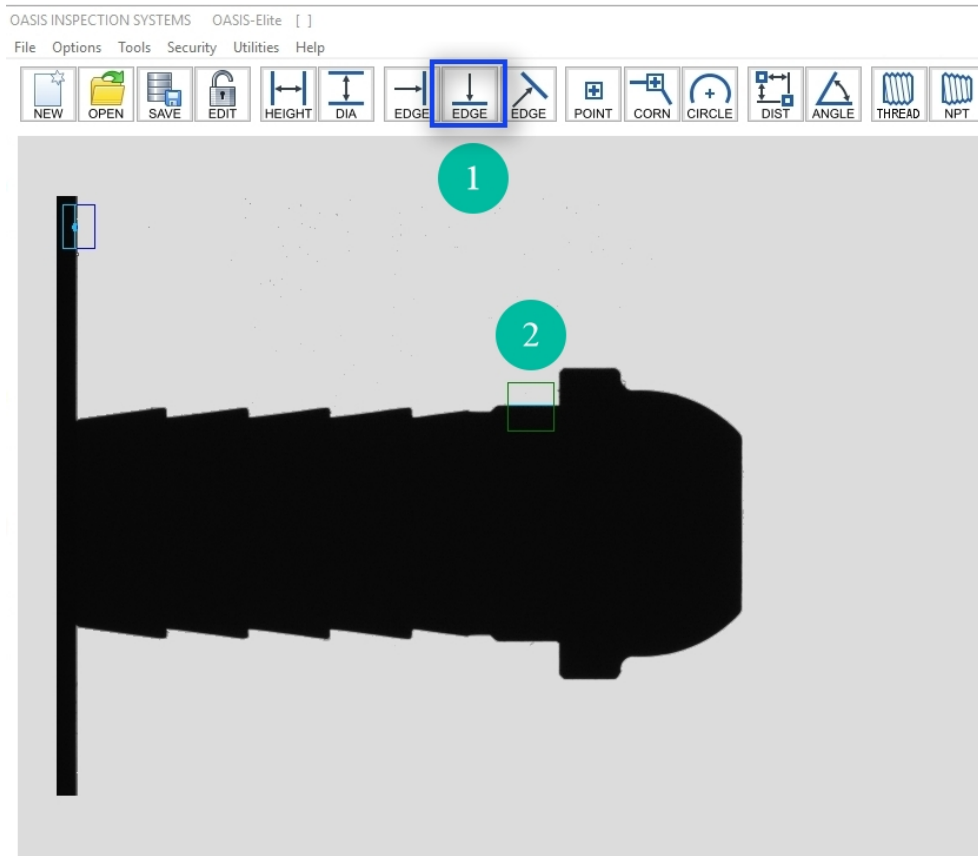
Tracking the Stage Surface

After the Edge Properties dialog is closed, note the small diamond marker that appears over the edge. This marker denotes the position of the stage's surface at the time the tool is created. All windows (unless locked) will be repositioned by the difference between the actual edge and this marker. So if the stage's surface is raised, so will all the tool windows in the inspection program.



Tracking the Part on the Stage

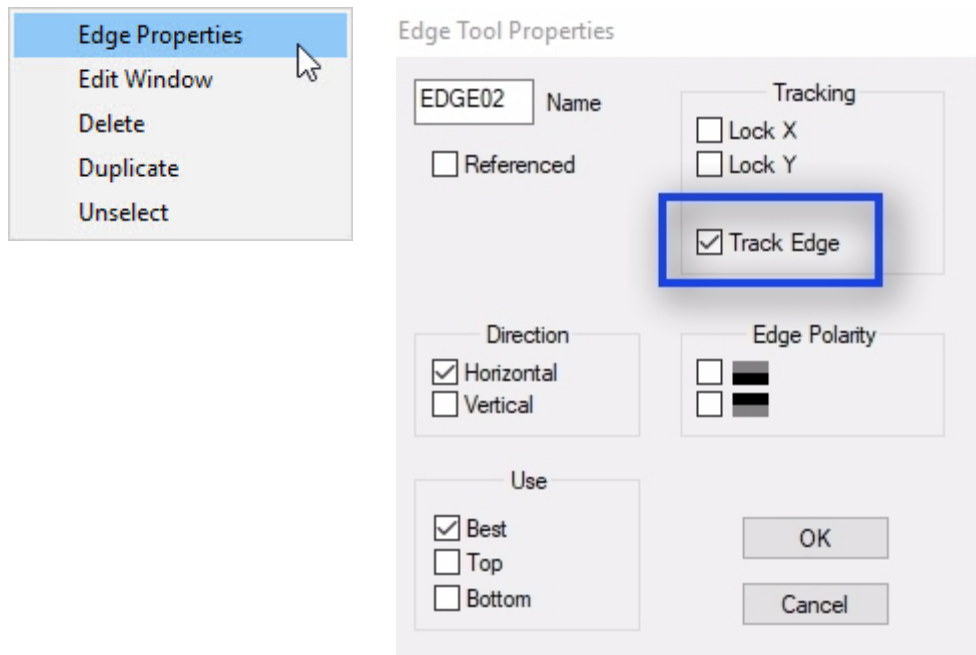
1. **Press the Horizontal Edge Icon.** Position the window in a similar manner as shown at #2 It's OK if you don't have a perfectly horizontal edge...you can place the horizontal edge on a thread or an angled edge.



Tracking the Part on the Stage

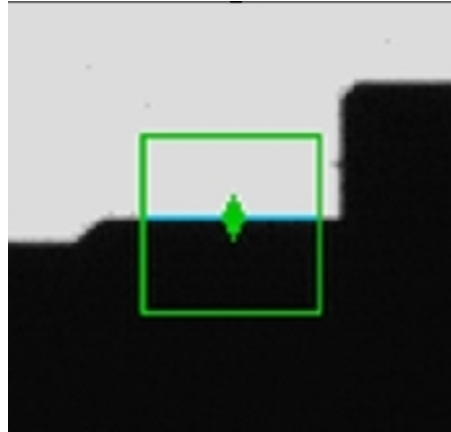
Set the Tool's Track Edge Property by Right-Clicking the Mouse and Choosing Edge Properties

The Track Edge property will reposition ALL the windows in the Y (vertical) direction. The stage's track edge will also be repositioned because the **Lock X (or Lock Y) property is not set.**



Tracking the Part on the Stage

Note the diamond shaped marker after the Edge Properties dialog is closed. As before, all tool windows will be repositioned by the difference between the part's edge and this marker, such that if the part moves slightly right to left, the tool windows will track the part.



Warning on Selecting Tracking Edges

Tracking Edges must be uniquely defined throughout the entire screen in the opposite direction of the tracking edge tool. In this example, since a Horizontal Edge tool is used to track, the edge must be unique throughout the width of the image. This image shows an example of a bad tracking edge, the reason being that a similar (white-to-black) edge created by the hole in the part (red rectangle). When the program executes this tool, there will be an uncertainty as to which edge should be used, creating unpredictable results.

